

# B.t.i

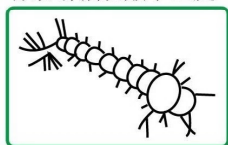
## 生物滅蚊幼蟲水溶性懸浮劑

登記編號 2P12(SC)

有效成份: 蘇雲金桿菌血清型H-14  
1200 International Toxic Units (ITU)  
per milligram

容量: 5公升

生物滅蚊幼蟲劑  
有效消滅蚊蟲孳生處



蘇雲金桿菌血清型H-14是一精選原細菌, 在不同蚊蟲孳生場地, 均能有效防治及消滅黑蚊及多種蚊種。

**CAUTION 警告**  
KEEP OUT OF REACH OF  
CHILDREN  
远离孩童

**CAUTION**  
小心

使用前小心閱讀並瞭解標籤內容及方法, 買方或使用者在  
使用此產品時如不遵守此標籤上使用方法及注意事項, 對  
造成的損害及損傷須自行承擔。

經銷商: Joy Time International Ltd.  
Room 2411, Hong Kong Plaza,  
188, Connaught Road West, Hong Kong. Tel: 28719021

Effective period 有效期:  
24 個月/months

### 使用方法:

BTI生物滅蚊幼蟲劑適宜在蚊幼成長時段使用, 特別在二齡, 其次是三齡及四齡時段。除了水塘淨化後及已消毒處理之水, 或供飲用的水外, BTI可以使用於任何水裏, 施藥時應配合適當的裝置或器械使用, 並需有足夠非目標無脊椎水性寄生物和其他捕食蚊蟲生物數量存在時, 蚊蟲數量會因此受到捕食而自然減少, 重複施藥相隔時段因此相應延長。

### 使用份量

蚊蟲: 孳生、棲息處	用量
積水處、去水道、溝渠灌溉水道、稻田、牧草地、林地、沼澤、集水池、雨水渠...等	每100平方米 250-500毫升
在蚊幼後三齡或四齡時段, 出現顯著數量, 或水質受到嚴重污染和/或海藻顯著存在時	每100平方米 >500毫升

### 注意事項

必須閱讀遵照標籤指示, 本產品只可作標籤上特定之用途。不遵守標籤指引可導致嚴重受傷甚至死亡。勿將其他除害劑噴灑於藥粒之上或其附近。由於顆粒的體積細小及表面粗糙, 在搬運及處理時應使用眼罩、膠手套及穿上保護衣物。調配或使用時不可飲食和吸煙。施藥前後, 應在周圍的當眼處加上警告告示。(如毒藥、不准進入、正在施放除害劑、除害劑名稱、施藥日期及時間) 請確保未穿上保護性衣物及器材之人仕及公眾在防治處理只之現場或附近。請根據建議之使用量及避免過量使用。操作後應用肥皂和清水徹底沖洗雙手及暴露的皮膚, 被濺衣物須洗滌後才可再穿。

### 貯存及棄置

儲存於攝氏30度以下並遠離陽光。貯存於陰涼及乾燥的地方並且需上鎖。勿讓小孩或動物接近, 不要和食物、水或飼料存放在一起。保持未用的餌劑於原裝容器內。用完的原裝容器不能再作其他用途。應根據香港法例第354章廢物處理條例來處理不需要的除害劑廢料, 如未能根據標籤有效地棄置本產品或本產品之廢料請聯絡環保署。

### 急救措施

如誤服: 除非醫生指示否則勿引吐。對無意識之患者勿餵食任何東西。立即延醫診治。  
如皮膚沾上: 以大量清水沖洗皮膚。立即延醫診治。  
如眼睛沾上: 若觸及眼睛將眼睛擰開以溫水沖洗15至20分鐘若仍感覺有刺激, 則延醫診治。  
解毒劑: 沒有特定解毒劑, 請按症狀診治。延醫診治時, 必須攜同此標籤。

# B.t.i

## Mosquito Biolarvicide Aqueous Suspension

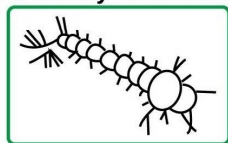
HK. Reg. No. 2P12(SC)

### Active Ingredient:

\* Bacillus thuringiensis subsp. israelensis, H-14(Bti)  
1200 International Toxic Units(ITU) per milligram

Net Content: 5 Ltrs.

**Biological larvicide  
Effective against Mosquitoes  
in a variety of habitats.**



BT is a highly selective microbial insecticide effective against mosquitoes and blackflies in a variety of habitats.

**CAUTION 警告**  
KEEP OUT OF REACH OF  
CHILDREN  
远离孩童

**CAUTION**  
小心

Read and understand the label before using. Seller warrants the quality of the product at time of sales. The use of ingredient recommendations for products range usage are non-binding but are based on the latest level of expertise and technology. Seller makes no warranty, express or implied, concerning the use of this product other than indicated on the label.

Manufacturer: Yangzhou Luyuan Bio-chemical Co. Ltd.  
扬州绿源生物化工有限公司

### DIRECTIONS FOR USE:

BTI only has effect on the mosquito larvae stage, especially on the 2nd, 3rd and 4th stage. BTI may be applied to any water sites except treated, finished water reservoirs or drinking water receptacles. BTI should be applied for suitable equipment. A seven to fourteen day interval between applications should be employed. Longer periods of mosquito population suppression may result where sufficient numbers of non-target aquatic invertebrate parasites and predators are present, since these are not affected by BTI and contribute to mosquito population reduction.

Mosquitoes/larvae: Habitat	Rate for control
Flood water, roadside ditches, irrigation ditches, rice fields, pastures, woodland pools, catch basins, storm water retention areas.	250-500ml. per 100 M <sup>2</sup>
When late third and early fourth instar larvae predominate, larval populations are high, or water is heavily polluted and/or algae are prevalent.	>500ml. per 100 M <sup>2</sup>

### Precautions:

Always read and follow label instructions. This product can only be used for purposes listed on the label. Failure to follow the instructions on this label may result in serious injury or may be fatal. Do not spray other pesticides on or around the granule. Due to the size and abrasiveness of the granule, use protective eyewear, plastic gloves and clothing to minimize exposure during loading and handling. When preparing and using the pesticides do not eat, drink or smoke. Before and after application, warning notices with (Poison, No Entry, Undergoing Pesticide treatment, Name of the pesticide, Time & Date of the treatment, etc.) should be posted at conspicuous locations. Wear protective clothing and equipment (e.g. overalls, goggles, PVC gloves etc.) at all times when handling pesticide. During application make sure person not without protective clothing inaccessible to the area. Follow the recommended application rate and avoid excessive use. Wash hands and exposed skin thoroughly before meals and after work and wash contaminated protective clothing before reuse.

Storage and disposal: Store below 30°C and out of the sun. Store in a cool, dry place under lock and key. Keep out of reach of children and animals. Do not store with food, water or feeds. Keep the unused pesticide in the labeled original container. Do not reuse the container for any other purpose. Any unwanted quantity of this pesticide must be disposed of in accordance with requirements laid down in the Waste Disposal Ordinance Cap.354. If there is any problem in disposing unused pesticide or its waste, please contact local Environmental Protection Department.

First aid: If swallowed- Do not induce vomiting unless told to do so by doctor. Do not give anything by mouth to an unconscious person. Seek medical attention immediately. If on skin- Rinse skin immediately with plenty of water for 15-20 minutes. Seek medical attention immediately. If in eyes- Hold eye open and rinse slowly and gently with water for 15-20 minutes. If irritation persists get medical help.

Antidote: No specific antidote. Treat symptomatically. Always bring along the label when seeking medical attention.