

THE MOST ADVANCED COCKROACH TREATMENT

STEGE®

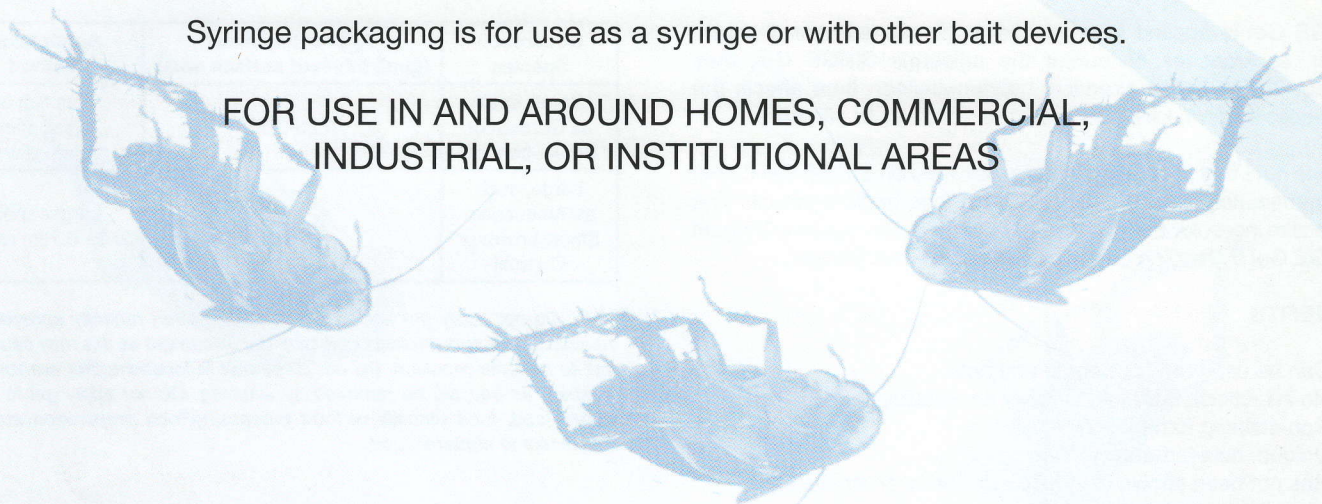


gel insecticide

RECOMMENDED FOR USE
BY COMMERCIAL APPLICATORS

Syringe packaging is for use as a syringe or with other bait devices.

FOR USE IN AND AROUND HOMES, COMMERCIAL,
INDUSTRIAL, OR INSTITUTIONAL AREAS



 **BASF**

The Chemical Company

INTRODUCING THE GEL BAIT INSECTICIDE



SIEGE Gel is a bait insecticide that is effective in long-lasting control of cockroaches. The active ingredient hydramethylnon is a potent inhibitor of the insect's metabolic system. Toxic symptomology includes a slowing of the heart rate, depression of respiratory movements, a decrease in oxygen consumption, and eventual flaccid paralysis.

SIEGE Gel controls German Cockroach (*Blattella germanica*) and American Cockroach (*Periplaneta americana*). It has shown to be effective on nymph and adult stages of the cockroach.

SIEGE Gel lasts up to 3 months through the baiting method thus saves costs, time and the product. The reduction of cockroaches can be noticed within a week after application. It is not corrosive to most types of aluminum and plastic.

HOW DOES IT WORK?

SIEGE Gel is applied to areas that cockroaches pass through. When cockroaches encounter the palatable **SIEGE Gel**, they devour it. The active chemical hydramethylnon then affects the metabolic system, killing cockroaches within 24 to 48 hours.

Please note that the cockroaches which feed on **SIEGE Gel** do not die immediately. Instead, they return to their harborages carrying the active ingredient with them where other cockroaches will ingest **SIEGE Gel** by feeding on their dead bodies and faeces.

BENEFITS

- Can be used around people and pets
- No insecticide odor and virtually no volatility
- Non-staining formulation
- Unique, delayed-action killing power
- Has not been shown to induce resistance or repellency
- Long-lasting palatability
- No site preparation requirement
- No mess

SUGGESTIONS OF USAGE

SIEGE Gel requires no site preparation so it can be used anywhere as spot or crack-and-crevice cockroach control.

SIEGE Gel can be used in homes (including kitchens, bedrooms), hospitals, warehouses, computer facilities, pet shops, and food preparation areas of restaurants and other commercial and institutional areas, including school lunchrooms.

Application of **SIEGE Gel** in the food/feed areas of food/feed handling establishments other than as a crack and crevice treatment is not permitted.

The lower application rate should be used for low to moderate infestations and the higher rate for more severe infestations.

DIRECTIONS FOR USE

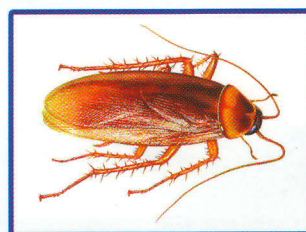
To apply gel, remove the cap on the nozzle. Touch the application tip to surface and apply. Recap the application tip after treatment is completed. The bait will adhere to non-greasy or non-dusty surfaces and will remain palatable to cockroaches as long as it is visibly present.

Reapply when bait is no longer visibly present, according to the remaining level of infestation, which is generally at a lower rate than the initial treatment. A visual inspection of bait placements is recommended at one week after the initial treatment where high infestations are being treated. Reapplication should be made if the bait is visibly depleted.

Numerous smaller placements will provide faster control than few larger spots, especially for German cockroach control.

Cockroach Species	Application Rate (g/m ² infested surface area)	Application Method
Small, such as German or Brown-banded	0.25-0.50	Thin film or small spot (0.5cm round)
Large, such as Americana, Smokybrown or Oriental	0.5-1.0	Larger spots (0.5 - 0.7cm round)

Note: Do not apply gel to areas which have been recently sprayed with insecticides or spray insecticides over gel placement as this may cause the bait to become repellent. Do not place bait in locations that are routinely washed, as bait will be removed by washing. Do not apply gel to areas where food, food utensils or food processing/food preparation surfaces may become contaminated.



American Cockroach
(*Periplaneta americana*)



German Cockroach
(*Blattella germanica*)